

The Nightingale Centre

Great Hucklow, Derbyshire



BROCHURE

2023



Welcome!

It's been good to say "Welcome" to so many guests in the last year after the trials of the pandemic. We have a busy programme for 2023 though we can still fit groups in where there are gaps. If you've been here before, you know that The Nightingale Centre is a venue with a difference, a special place, so do let your friends or colleagues know if they are looking for somewhere new for their group to meet.



Please do browse through our brochure and if you see something that may be for you, why not get in touch with the named contact and find out more about it? 2023 may be the year for you to try something different!



Whether you are new to the Centre or have visited many times before, we look forward to seeing you in the future.

looking forward to welcoming you!

THE MANAGEMENT COMMITTEE

*Cathie, Colin, Dot, Ian, John, Karen,
Marion, Michael, and Richard*

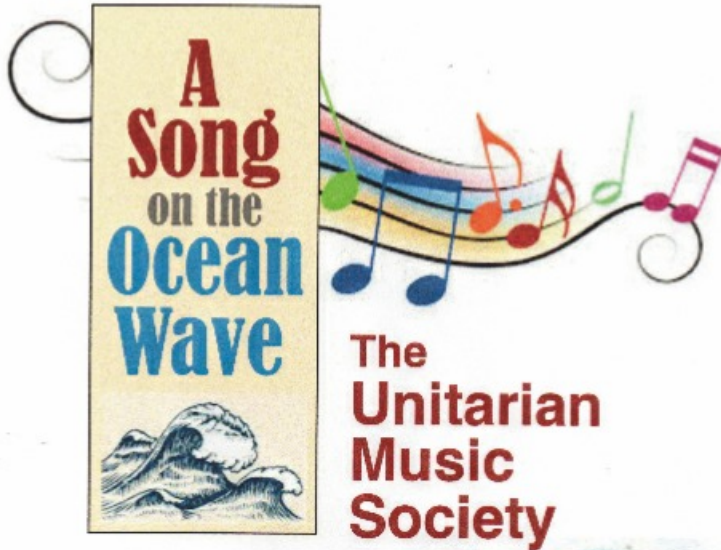
FOR FURTHER INFORMATION INCLUDING PRICES, PLEASE CONTACT

The Centre Office info@thenightingalecentre.org.uk

The Nightingale Centre, Great Hucklow, Buxton, SK17 8RH

01298 871218 website: www.thenightingalecentre.org.uk

Unitarian Music Society Conference 2023



**Summer
Conference
11th - 14th
August 2023**

**Nightingale Centre,
Great Hucklow, Derbyshire
*Workshops / Talks /
Quizzes / Socials***

**Contact UMS Secretary
Margaret Robinson
margaretrobinson81@gmail.com**

*Booking forms
available Jan 2023*

FOR FURTHER INFORMATION INCLUDING PRICES, PLEASE CONTACT
The Centre Office info@thenightingalecentre.org.uk
The Nightingale Centre, Great Hucklow, Buxton, SK17 8RH
01298 871218 website: www.thenightingalecentre.org.uk

Walking and Cycling Holidays



To plan your own walking or cycling break

Give the Centre a ring and ask if there are any spare weeks mid-weeks or weekends available. There are discounts in the winter months!

WINTER WALKING WEEKENDS

Friday 5th to Sunday 7th January 2024 - Easy and medium difficulty walks with evening activities including a barn dance for adults & families with children up to the age of 11.

Friday 12th to Sunday 14th January 2024 - Easy, medium and more strenuous walks with evening barn dance, quiz and cheese & wine. For adults and families with children from 12 years



SUMMER WALKERS WEEKEND

Friday 14th to Sunday 16th July 2023

Enjoy a good walk in this lovely countryside and after lounge or sun room, perhaps play some games and enjoy the tasty food. Join in a gentle amble or longer day-walk. Perhaps mix the walking with a



- ✓ **PACKED LUNCHES**
- ✓ **INFORMATION ON LOCAL WALKS**
- ✓ **BIKE CLEANING & STORAGE**



FOR FURTHER INFORMATION INCLUDING PRICES, PLEASE CONTACT

The Centre Office info@thenightingalecentre.org.uk

The Nightingale Centre, Great Hucklow, Buxton, SK17 8RH

01298 871218 website: www.thenightingalecentre.org.uk

**FOY
Conference
28th April to
1st May 2023**

Next year's Foy Conference

Open to non-Foy members

COMPLEMENTARY THERAPIES

Healing Hands

Compassionate Hearts
and Intuitive Minds

Conference Leader: Gwyneth Roper

More information from our Conference Secretary
Joan Partington

coljopartington@gmail.com

28th April - 1st May, 2023

Bookings with

The Nightingale Centre, Great Hucklow



is a fellowship of women and men who, in a spirit of free inquiry, seek to understand the nature of present issues and problems - political, social and religious. It was founded in 1924 as The Fellowship of Youth. In 1957 it became known as the Foy Society as it had gradually taken on the role of an inter-generational group.



FOR FURTHER INFORMATION INCLUDING PRICES, PLEASE CONTACT
The Centre Office info@thenightingalecentre.org.uk
The Nightingale Centre, Great Hucklow, Buxton, SK17 8RH
01298 871218 website: www.thenightingalecentre.org.uk

Barrow Art

Fri 2nd to Sun 4th June
and

Fri 4th to Sun 6th August



Contact for booking: Centre (see below)
Contact for information: anthonybarrow@sky.com

Art Classes with

<p>Tue 9th to Thu 11th May</p>	<p>Spring forward with botanical illustration</p> <p>Celebrate buds, bulbs and May blossom on this delightful residential workshop, learning the art of botanical illustration in watercolours, with professional artist Dawn Wright SBA.</p>	
<p>Mon 17th to Fri 21st July</p>	<p>Programme to be announced</p> <p>Please see Fieldbreaks website for details when available.</p>	
<p>Tue 15th to Fri 18th August</p>	<p>Summer Art School</p> <p>Take time out to study trees and the landscape with professional artist Lionel Playford, as seen on Sky Arts. Use the beautiful village surroundings taking sketches and making studies, then return to the studio to work on your compositions with expert guidance from Lionel.</p>	
<p>Tue 19th to Thu 21st September</p>	<p>Botanic Illustration in graphite or pen and ink</p> <p>At this time of year there are many things to choose from which suit the medium of graphite including ornamental gourds to interesting seed heads. Take your pick from a selection of items supplied or bring your own, and spend your time studying nature's creations with expert guidance from Julie Small SBA</p>	

These enjoyable art courses cater for all abilities

To book contact Hazel hazel@fieldbreaksart.co.uk

FOR FURTHER INFORMATION INCLUDING PRICES, PLEASE CONTACT
The Centre Office info@thenightingalecentre.org.uk
The Nightingale Centre, Great Hucklow, Buxton, SK17 8RH
01298 871218 website: www.thenightingalecentre.org.uk

PROGRAMMES for FAMILIES and YOUNG PEOPLE

The Nightingale Centre has a long history of hosting young people and families enthusiastically and safely. As well as hosting schools and Send a Child to Hucklow groups, programmes for Unitarian young people have been provided regularly at the Centre.

Junior Weekend *Magical Journeys* (young people go free!) Fri 6th to Sun 8th October

For information and to book please contact
Helen Mason HMason@unitarian-college.org.uk 07494 495743



Centre Shop



Our Centre stocks beautiful Unitarian & non-Unitarian jewellery. We also have a **Children's "Corner Shop"** where little mementos can be purchased.

There are often plants for sale purchasable to support our poly-tunnel development, growing our own fresh food.

Gardeners - if you're splitting plants at home we'd love to have some of your spare plants to sell here.

FOR FURTHER INFORMATION INCLUDING PRICES, PLEASE CONTACT

The Centre Office info@thenightingalecentre.org.uk

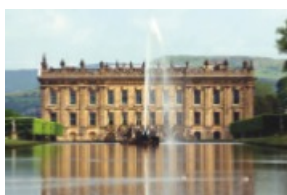
The Nightingale Centre, Great Hucklow, Buxton, SK17 8RH

01298 871218 website: www.thenightingalecentre.org.uk

MIDWEEK BREAK - COME AND GO AS YOU PLEASE

Monday 17th to Friday 21st July

Enjoy a local walk, visit Castleton, Bakewell, Matlock or one of the other many tourist gems nearby. Perhaps borrow one of our Local Village Trail maps. There are places nearby ideal for families, for young as well as older guests. And it is wonderfully relaxing just pottering around the Centre itself.



... or just contact us (see below) for a relaxing break **anytime** and we can see if we can fit you in!



Serenity Retreat Deep Listening

Meditation
Relaxation
Space

Fri 27th Jan to Sun 29th Jan 2023
and Fri 17th Feb to Sun 19th Feb 2023

www.serenityretreat.co.uk

FOR FURTHER INFORMATION INCLUDING PRICES, PLEASE CONTACT
The Centre Office info@thenightingalecentre.org.uk
The Nightingale Centre, Great Hucklow, Buxton, SK17 8RH
01298 871218 website: www.thenightingalecentre.org.uk

Christmas Lights Weekend

Fri 1st to Sun 3rd December

Start the festive season here - warm hospitality, full board, village atmosphere with its Christmas lights and lovely surroundings



Scrumptious Christmas Lunch

Sat 2nd December



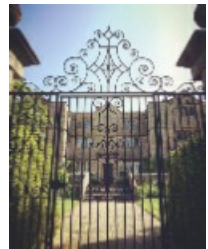
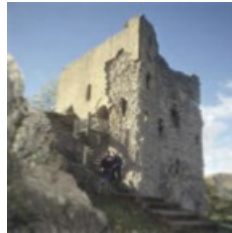
**Contact the Centre Office
to reserve your lunch or weekend stay**

FOR FURTHER INFORMATION INCLUDING PRICES, PLEASE CONTACT
The Centre Office info@thenightingalecentre.org.uk
The Nightingale Centre, Great Hucklow, Buxton, SK17 8RH
01298 871218 website: www.thenightingalecentre.org.uk

Chapel & District Weekends



Over many years churches, chapels and districts have planned get-togethers at the Nightingale Centre. Apart from combining good fellowship with excellent accommodation and catering, there are lots of interesting places to visit or you might just want to appreciate the peace and lovely countryside of this part of Derbyshire.



Why not contact the Centre and ask about availability and further details?

FOR FURTHER INFORMATION INCLUDING PRICES, PLEASE CONTACT
The Centre Office info@thenightingalecentre.org.uk
The Nightingale Centre, Great Hucklow, Buxton, SK17 8RH
01298 871218 website: www.thenightingalecentre.org.uk



Unitarian Society for Psychical Studies Conference 2023

Fri 22nd to Sun 24th September

Contact for further details when available:
vh.elliott1@gmail.com



Unitarian Women's Group Conference

Fri 20th October to Sun 22nd October

Exploring the Spiritual Quest and Women's Experience

Led by Rev Celia Midgley and Lynne Davies



**For more information contact
margaretrobinson81@gmail.com 07799896452**

FOR FURTHER INFORMATION INCLUDING PRICES, PLEASE CONTACT
The Centre Office info@thenightingalecentre.org.uk
The Nightingale Centre, Great Hucklow, Buxton, SK17 8RH
01298 871218 website: www.thenightingalecentre.org.uk

Hucklow Summer School

19th - 26th August 2023

For further details (when available):

www.hucklowsummerschool.co.uk



Retreat: Foundations of Mindfulness

1st Apr 2023 - 5th Apr 2023

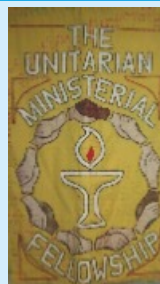
Tutors: Rebecca Crane & Jaya Redgard

For more information about the course courses, **including who it is designed for**, please see the Network's website

www.mindfulness-network.org

Ministerial Fellowship Conference

Mon 23rd to Thu 26th October 2023



FOR FURTHER INFORMATION INCLUDING PRICES, PLEASE CONTACT

The Centre Office info@thenightingalecentre.org.uk

The Nightingale Centre, Great Hucklow, Buxton, SK17 8RH

01298 871218 website: www.thenightingalecentre.org.uk

FRIENDS OF THE NIGHTINGALE CENTRE

Our *Friends* help in lots of different ways - telling people about the Centre, fundraising for the Centre, helping with some of the Centre “jobs”, recruiting more “*Friends*”, helping at Open Days, providing photos, contributing to Centre development plans, and/or making a regular financial contribution.

Our “*Friends*” receive news about the Centre’s developments and many through their regular contributions earn entitlement to £5 off a chosen weekend/week stay each year.



Over many years our *Friends* have helped us to make ongoing improvements and ensure the Centre will still be here to serve future generations.

To become a “*Friend*” or find out more please speak to the Centre Office

Send a Child to Hucklow

“Send a Child to Hucklow” Fund enables holidays at the centre for groups of disadvantaged children having no regard to religious, political, racial and other considerations.

Donations help us welcome more groups of children to the centre each year.



You can donate via
www.sendachildtohucklow.org.uk

or, for more info, please contact Chris Hayhurst 01483 419577
email: secretary@sendachildtohucklow.org.uk

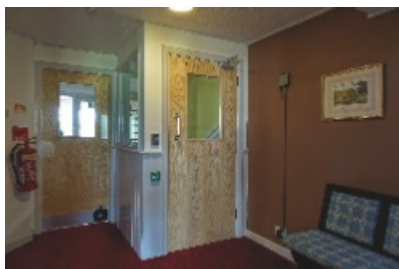
FOR FURTHER INFORMATION INCLUDING PRICES, PLEASE CONTACT
The Centre Office info@thenightingalecentre.org.uk
The Nightingale Centre, Great Hucklow, Buxton, SK17 8RH
01298 871218 website: www.thenightingalecentre.org.uk

Taking care of our guests ...

You can be assured that The Nightingale Centre fulfils its responsibilities at all times to keep guests safe. Our health and safety arrangements are updated and monitored regularly and we have measures in place to deal with emergencies.

The government requirements relating to the Covid pandemic have eased considerably but rest assured we will respond appropriately to any required changes and meanwhile the measures we have in place will be described on our website.

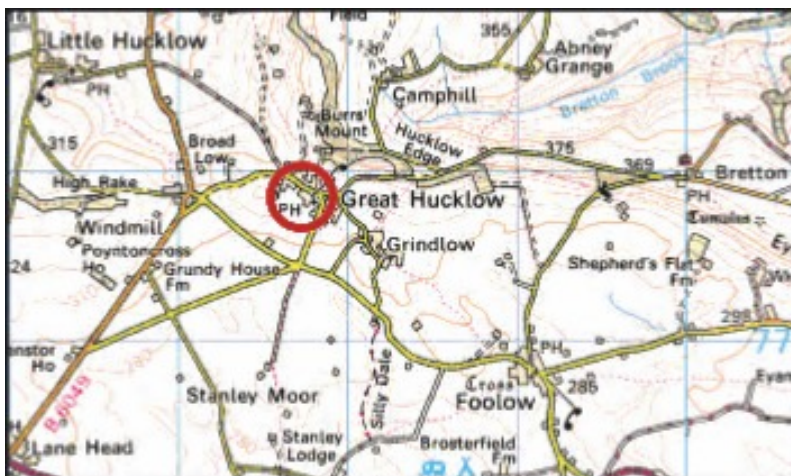
Our approach to Safeguarding is set out in our safeguarding policy. We have in place coded access to our accommodation with a particular attention to keeping young people safe when staying at the centre. Where guests have accessibility problems these can be discussed in advance with the Centre and we can advise on how best we can assist.



FOR FURTHER INFORMATION INCLUDING PRICES, PLEASE CONTACT
The Centre Office info@thenightingalecentre.org.uk
The Nightingale Centre, Great Hucklow, Buxton, SK17 8RH
01298 871218 website: www.thenightingalecentre.org.uk

How to get to the Nightingale Centre

Centrally situated and accessible by private or public transport



BY CAR

Great Hucklow is situated just off the B6049, north of the A623 (Stockport to Chesterfield road), near Tideswell. From Chesterfield take the A619. From Manchester and Stockport take the A6. From Sheffield take the A625. For Sat Nav use SK17 8RH.

There is ample free parking at the Centre. Note that the car park is at the rear of the centre and accessed via the entrance opposite the Old Chapel.

BY TRAIN

From Manchester and Stockport there is a regular service to Buxton. From the east the connection is via Chesterfield or Sheffield (15 miles) or Hope (4 miles) Connections can be made by bus (see below) or taxi (see below).

BY BUS

There are regular bus services running through the village. Timetables vary according to the season. Please check availability via Traveline East Midlands 0871 200 2233 or the useful website www.travelineeastmidlands.co.uk

TAXIS

Taxis are usually available at Sheffield, Chesterfield and Buxton stations. From Hope station (4 miles from the Centre) **taxis for both ways need to be booked in advance**. Pennys Taxis (07917 710771) have proved useful in the past or you could contact Als Taxis 07866 661188 or Raj 07541 101076.

FOR FURTHER INFORMATION INCLUDING PRICES, PLEASE CONTACT

The Centre Office info@thenightingalecentre.org.uk

The Nightingale Centre, Great Hucklow, Buxton, SK17 8RH

01298 871218 website: www.thenightingalecentre.org.uk

A flavour of the Centre's 2023 programme at a glance

6-8 Jan	Winter Walking I	13-20 May	Anukampa Bhikkhuni	19-26 August	Hucklow Summer School
13-15 Jan	Winter Walking II	26 May - 2 June	Family Event	1-3 September	Family event
27-29 Jan	Serenity Retreat	2-4 June	Barrow Art 1	19-21 September	Fieldbreaks
3-5 Feb	Ringway ramblers	7-9 July	Unitarian College	22-24 September	USPS
5-7 Feb	Unitarian College	9-10 July	MIM Leaders	22-24 September	Earth Spirit Network
10-12 Feb	Unitarian College	10-13 July	Ministry in the Making	29 Sept - 1 Oct	Green Spirit
17-19 Feb	Serenity Retreat	14-16 July	Summer Walkers	20-22 October	Unitarian Womens Group
24-26 March	Unitarian College	14-16 July	Unitarian College	3-5 November	Angels in the Peak
1-5 April	Mindfulness Network	17-21 July	Come and Go as You Please/ Fieldbreaks	1-3 December	Christmas Lights
21-23 April	Druid Network	21-23 July	Woven Chords	2 December	Christmas Lunches
21-23 April	Unitarian College	24-28 July	Stockport Quakers	+ 19 Send a Child to Hucklw holidays + 8 School groups and a variety of other groups, some who hire space on an <i>ad hoc</i> basis	
28 Apr-1 May	FOY Conference	4-6 August	Barrow Art 2		
5-7 May	SUBUD	11-13 August	Unitarian Music Soc		
9-11 May	Fieldbreaks	15-18 August	Fieldbreaks		

and... there may be space during the year to fit in your own group alongside the programme published above - just ask the Centre (see below)

Opportunities to book your own event

The Nightingale Centre is booked by a very wide range of organisations. But we may have some weeks, weekends or mid-weeks free, especially, but not only, in winter months (when there is a discount!). At all times of the year we some times have space alongside other groups using the centre. Perhaps you need a **school field trip venue**, a venue for a **family occasion** to celebrate, or your congregation or district wants to book a holiday. Or your organisation needs to undertake a **review**, provide **training** or hold an **AGM** or **conference** away from base. Or you want to organise a **retreat**, away from it all.

Thank you to John Hewerdine and all others for our photographs

FOR FURTHER INFORMATION INCLUDING PRICES, PLEASE CONTACT
 The Centre Office info@thenightingalecentre.org.uk
 The Nightingale Centre, Great Hucklow, Buxton, SK17 8RH
01298 871218 website: www.thenightingalecentre.org.uk