



The Nightingale Centre BROCHURE 2012

These pages give a picture of some of the things which will be going on at the Nightingale Centre during 2012. Some of our space is pre-booked by our associated charity *Send a Child to Hucklow* and by schools, universities, businesses, wedding parties etc, but importantly the centre is as ever able to offer the opportunity for Unitarians to enjoy the special atmosphere of this Derbyshire haven as they have done for generations.

Over many years the Centre has been grateful for the generosity of the *Friends of the Nightingale Centre* and many other Unitarians and their friends in terms of time and money and also for the vision, hard work and enthusiasm of a succession of managers with their staff. This has enabled many significant improvements to the buildings and facilities whilst taking care to preserve the Centre's character. This year has been no exception and if you come and stay in 2012 we hope and believe you'll be pleased with our ongoing efforts to make your stay ever more comfortable and enjoyable as well as increasingly eco-friendly. Also in the present economic climate we have kept our prices as low as we possibly can. We believe we provide tremendous value for money in what we offer. So please do look through our Brochure. If you need more information please don't hesitate to contact us. We're here to help!

Alongside its good food and comfortable accommodation, the centre has walking routes starting literally from our door. We have picnic lunches & excellent drying facilities available. We sometimes have spaces for small groups alongside the activities of other groups where they are not taking over full use of the centre. Perhaps a chance to meet some new friends!

To plan your walking break please give Stella a ring and ask if there are any spare weeks, mid-weeks or weekends.

Prices from £104 for full board from Fri evening buffet to Sun lunch

Walking Breaks



Chapel and District Weekends



Increasingly popular!

Several churches and districts have discovered the pleasure of a weekend away together at Hucklow. Some come every year! Apart from the opportunity to share good fellowship there's lots to do and interesting places to go in this lovely part of Derbyshire. If you want to think about this ring Stella who can advise and indicate if there are any free weekends.

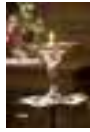
From £104 for full board Fri evening buffet to Sun lunch

**Winter discounts available
November to February**

The Nightingale Centre

Stella Burney, Centre Manager, Great Hucklow, Buxton, Derbyshire SK17 8RH
email: info@thenightingalecentre.org.uk telephone: 01298 871218 website: www.thenightingalecentre.org.uk

for Lay Leaders



Lay leaders Support Group Feb 28th to 1st March 2012

A seminar for Local Leaders commissioned by the Local Leadership Strategy Group on Conflict Resolution, led by Colin Patterson of the Mennonite Bridge Builders' Ministries. Colin led a similar workshop for Ministers in Sept 11 and reports of this were excellent!

Places are limited. All bookings and for further information please contact Dot Hewardine 01257 269 502 dot@hewardinefamily.co.uk. From £114.50 full board

Unitarian Communications Co-ordinators Network

Friday evening Feb 24th to
Sunday lunch Feb 26th 2012

This weekend provides a really good way of helping your church to make itself better known. A chance to learn more about websites and PR (pictures & strategy) and including a publicity case study. There is also on Friday an optional workshop on photo manipulation

Perhaps your church or district will sponsor your attending?

For further information please contact Joan Wilkinson 01332 814055



Unitarian Youth Programme 2012



Fri March 2nd to Sun
March 4th

Junior Weekend (age 7-11years)

Fri March 16th to Sun
March 18th

Inter & Senior Weekend (age 11-17 years)

Mon Aug 6th to
Fri Aug 10th

Fun Days Away (age 12-17 years)

Fri Oct 5th to
Sun Oct 7th

Junior Weekend (age 7-11years)

Fri Nov 16th to
Sun Nov 18th

Inter and Senior Weekend (age 11-17 years)

**For more information about any of the above events please contact John Harley
tel. no. 07985 900 935 or e-mail jharley@unitarian.org.uk**

Unitarian Society for Psychical Studies

Non-members very welcome!

Annual Conference

Friday 7th September to Sunday 9th September 2012

More details from Jo Rogers 01539 568 631

The Nightingale Centre

Stella Burney, Centre Manager, Great Hucklow, Buxton, Derbyshire SK17 8RH
email: info@thenightingalecentre.org.uk telephone: 01298 871218 website: www.thenightingalecentre.org.uk

Art Classes at Great Hucklow

with  field breaks

Are you keen to explore something new or wanting to develop further your existing art skills?

These enjoyable art courses cater for all abilities and are led by helpful experienced artists in the attractive surroundings of Hucklow

for more information contact Sue Field 01433 621420 or check out the website www.fieldbreaks.co.uk



Winter Woods in Coloured Pencil, Watercolour or Graphite 20th to 22nd Feb 2012

Recognising trees in winter, illustrating bark and twigs and fascinating lichens using the surrounding grounds for inspiration

Early Spring Flowers

in Coloured Pencil, Watercolour or Graphite 28th to 30th March 2012

Learn techniques to illustrate flowers and plants from photographs. Bring your own photos or choose for a selection provided by the tutor

Grasses and Meadow Flowers

in Coloured Pencil, Watercolour or Graphite 23rd to 25th May 2012

Enjoy illustrating meadow flowers and different types of grasses in this fascinating workshop.



Landscape Painting in June 8th to 10th June 2012

Using the wonderful surroundings as a canvas, learn mixed media techniques to achieve rewarding paintings with structured one to one tuition from professional artist and tutor Gabby Hanlon

Early Summer Landscape Painting 22nd to 24th June 2012

A delightful landscape painting weekend geared to free up your style and discover different techniques to produce interesting landscape pictures under expert guidance from professional artist Paul Curtis.

Leaves for the Terrified!

in Coloured Pencil, Watercolour or Graphite 1st to 3rd August 2012

Portraying leaves can be a challenge but since most plants have them, it has to be done! And of course they can be particularly beautiful. Build up a leaf library and learn they are not as scary as they look!



Vegetable Patch Harvest in Coloured Pencil, Watercolour or Graphite 12th to 14th September 2012

An really enjoyable weekend developing your art skills. Choose from a selection of fruit and vegetables provided or bring something from your own allotment, vegetable patch or grow bag to make a delicious portrait of home grown food.



Autumn Colours – Landscape Painting weekend 19th to 21st October 2012

Enjoy the autumn landscape and capture the wonderful colours at this time of year on this relaxing and informative landscape painting weekend with professional artist Paul Curtis



Have Fun with Eggs & Feathers in Coloured Pencil 7th to 9th November 2012

On black, white or coloured paper, tutor Sue Vize will show techniques to create a stunning portrait of eggs and iridescent feathers.

THESE COURSES ARE OPEN TO PEOPLE OF ALL ABILITIES - IF YOU NEED MORE INFO PLEASE GIVE SUE FIELD A RING!

Prices including - Full board residential en-suite £298,
Full board residential standard £285, Non-residential £198 (including lunches and refreshments)

The Nightingale Centre

Stella Burney, Centre Manager, Great Hucklow, Buxton, Derbyshire SK17 8RH
email: info@thenightingalecentre.org.uk telephone: 01298 871218 website: www.thenightingalecentre.org.uk

FOY Conference

Non-members welcome!
Fri May 4th to Mon May 7th 2012



The mystery of the Murder Mystery in our culture

Join the FOY Society for their annual conference and uncover the mystery of "Who dunnits". An intriguing weekend for all!

For full details please contact Joan Partington 01228 670565
partingtons@gmail.com

Unitarian Discovery Holiday



Mon July 9th to Fri July 13th 2012

Ways of seeing – all in the eye of the beholder

A short holiday to relax sing worship and have fun together while exploring the theme from a religious, artistic and social point of view.

For further information
please contact Marjorie Walker 07718 1067320

RE Summer School



Sat Aug 18th to
Sat Aug 25th 2012

Sacred Living



A week packed with a rich mix of activities to stimulate the heart and the head. Optional sessions will cover the theme along with relaxed fellowship and fun

For further information please contact
Margaret Kirk 01845 574542 or via info@hucklowsummerschool.org.uk

Papercraft Party

Sat Aug 25th to
Mon Aug 27th 2012



Fun for total beginners and the more advanced!

A weekend of fun and frolics with paper and glue. Four taught Cardmaking and other paper craft sessions with a relaxing "Craft and Chat" on Saturday night. Learn new techniques, be prepared to laugh, meet new friends and win prizes. Take time out to explore the local area if you like. All materials provided (*you just need to bring a simple small toolkit – details given when you book*)

Book early - places are limited to give everyone plenty of crafting space! More details from

From £154 full board Fri evening buffet to Sun lunch

Contact for more details: Gwyneth Roper 0161 9414794

Ministers' Conference 2012

Mon 3rd to Thu 6th September 2012

Further details from
Sue Woolley 01604 870 746

The Nightingale Centre

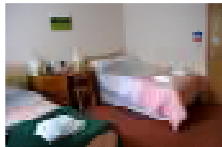
Stella Burney, Centre Manager, Great Hucklow, Buxton, Derbyshire SK17 8RH
email: info@thenightingalecentre.org.uk telephone: 01298 871218 website: www.thenightingalecentre.org.uk

Open Day

Saturday 11th August 2012



Come and see us!



On our 2012 Open Day take the chance to see the changes that have taken place at the Nightingale Centre to make things more comfortable and also more eco-friendly. There'll be things to do, scrumptious food on offer and people to say hello to. Stay overnight if you wish. Link it to a congregational get-together weekend?

We'd love to welcome your congregation here – or just come on your own, meet some old friends, perhaps or make some new ones!

August Bank Holiday

“Come and go as you please”

A flexible Bank Holiday weekend break in the lovely Peak District (and you could link this to the mid-week break below)

Sat 25th to Mon 27th August 2012

This Half Board weekend break offers you the freedom to fill your days exactly how you wish. So enjoy a walk, visit a well dressing, see one of the many sights or just 'chill out'. This break will suit anyone who enjoys a comfy bed, good food and doing their own thing!

From £104 with flexibility to meet your particular requirements



Midweek Break

Tuesday 28th to Fri 31st August 2012

Catch the end of summer! Free to do as you wish, this package allows you to enjoy this lovely Peak District at your own pace.

Special Summer Sizzler Offer
From £117 Half Board

If you want to join it with the Bank Holiday weekend it will give you even more days to explore

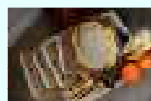


Unitarian Music Society

Annual Conference

Non-members welcome!

Friday evening 31st August to Monday lunchtime 3rd September 2012



Fun and learning for those who sing, play an instrument at any level or just music enthusiasts. This year alongside a variety of other options we will be rehearsing and performing Gilbert & Sullivan's "Trial by Jury". Book early to be sure of a place!

Full board from £156

Further details from UMS Secretary, Adrienne Wilson 01483 421905

The Nightingale Centre

Stella Burney, Centre Manager, Great Hucklow, Buxton, Derbyshire SK17 8RH
email: info@thenightingalecentre.org.uk telephone: 01298 871218 website: www.thenightingalecentre.org.uk

Unitarian Women's Group

From £104 full board



The power of anger in the work of love

Fri 26th to Sun 28th October 2012

A chance to learn from each other at UWG's annual conference



Autumn Break

Monday 29th October to Friday 2nd November 2012

At our friendly Autumn Break you can come and go as you please during the day and be cosy in the evening with a roaring fire plus quizzes, play reading, games and music as you wish.

Four nights full board from only £188

National Unitarian Fellowship

Providing a channel of communication between people who value a free and positive approach in their quest for spiritual truth.



nuf@nufonline.org.uk

Annual Conference

Friday 2nd November to Sunday 4th November 2012

Interested?
Please contact the Centre Manager

Unitarian Association of Lay Ministry



Annual Conference

Friday 23rd November to Sunday 25th November 2012

Further details from
Sue Woolley 01604 870746



Christmas Lunches

In December 2012 we hope to welcome many of you to enjoy a scrumptious Christmas lunch at the centre. Many of you will know what an excellent treat this is but if you've not been before why not come along this year and see! Come as a congregation day out, on your own or with friends. There'll be things to see, mulled wine on arrival, scrumptious food and people to say hello.

The Nightingale Centre

Stella Burney, Centre Manager, Great Hucklow, Buxton, Derbyshire SK17 8RH
email: info@thenightingalecentre.org.uk telephone: 01298 871218 website: www.thenightingalecentre.org.uk

Friends of the Nightingale Centre

Our "Friends" help in lots of different ways - telling people about the Centre, helping with fundraising for the Centre, helping with some of the Centre "jobs", recruiting more "Friends", helping at Open Day or similar events, contributing to Centre development plans, and/or making a regular financial contribution.

Our "Friends" receive Newsletters on the Centre's developments and many through their regular contributions earn entitlement to £5 off any weekend/week stay each year. Over the years our Friends have helped us to make ongoing improvements and ensure the Centre will still be here to serve future generations.

**Are you interested to know more about becoming a Friend?
Please speak to Stella or any member of staff.**



Chalice pendants

The shop in nearby Castleton which makes these beautiful chalice earrings, necklaces and pendants has brought out new designs, obtainable from the centre, which make lovely presents for your friends, relatives - and yourself!

For further information see our website or contact the Centre Manager.

How to get to the Nightingale Centre

We're centrally situated within the UK and accessible by private or public transport

Although seeming "away from it all", Gtr Manchester, South Yorkshire and the Midlands are all nearby. Along the ridge above Hucklow you can see five counties on a clear day. For national events there are few places more central to the country as a whole.



Great Hucklow is situated just off the B6049, north of the A623 (Stockport to Chesterfield road), near Tideswell. From Chesterfield take the A619. From Manchester and Stockport take the A6. From Sheffield take the A625. For Sat Nav use SK17 8RH.

There is ample free parking at the Centre but note that the entrance to the car park (at the rear of the centre) is opposite the Old Chapel.



From Manchester and Stockport there is a regular service to Buxton. From the east the connection is via Chesterfield or Sheffield (15 miles) or Hope (4 miles). Connections can be made by bus or taxi.



There are regular bus services running through the village. Timetables vary according to the season. Please check availability via East Midlands Journey Planner 0871 200 2233.

If you need further information please ring the Centre Manager – we're here to help

The Nightingale Centre

Stella Burney, Centre Manager, Great Hucklow, Buxton, Derbyshire SK17 8RH
email: info@thenightingalecentre.org.uk telephone: 01298 871218 website: www.thenightingalecentre.org.uk

Some of the places to visit from Gt Hucklow



The ancient village of Eyam, just a few miles from the centre, attracts visitors from all over the world to see the "plague" cottages and famous church. The nearby village of Castleton draws many visitors to its Blue John Caves, speciality shopping, Peveril Castle and other attractions.

Chatsworth House is only a short drive away. It has magnificent gardens and a resplendent interior. For the young there is a farmyard and adventure playground. An ideal family day out.

The market town of Bakewell is a delight to wander through and a visit to Haddon hall is well worthwhile, one of the finest examples of a Tudor country house. For shopping, and perhaps a visit to its splendid little theatre, the elegant spa town of Buxton is easily within reach.

And scenic walks start from the centre itself!

The Nightingale Centre's 2012 Programme at a glance

Jan 13th - 15th	Winter Walking 1	Aug 25th - 27th	Papercraft Party
Jan 20th - 22nd	Winter Walking 2	Aug 25th - 27th	Come and Go as You Please
Feb 20th - 22nd	Winter Woods Art Class	Aug 28th - 31st	Mid Week Break
Feb 24th - 26th	Unitarian Comm Coordinators Network	Aug 31st - 3rd Sept	Unitarian Music Society
Feb 28th-Mar 1st	Lay Leaders Support Group	Sept 3rd - 6th	Ministers Conference
Mar 2nd - 4th	Youth Programme Juniors	Sept 7th - 9th	Unitarian Soc. for Psychical Studies
Mar 16th - 18th	Youth Programme Inters/ Seniors	Sept 12th - 14th	Vegetable Patch Harvest Art Class
Mar 28th - 30th	Early Spring Flowers Art Class	Oct 5th - 7th	Youth Programme Juniors
May 4th - 7th	FOY Conference - Murder Mystery	Oct 19th - 21st	Autumn Colours Landscape Painting
May 23rd - 25th	Grasses & Meadow Flowers Art Class	Oct 26th - 28th	Unitarian Women's Group
June 8th - 10th	Early Summer Landscape Painting	Oct 29th - Nov 2nd	Autumn Break
July 9th - 13th	Unitarian Discovery Holiday	Nov 2nd - 4th	National Unitarian Fellowship
Aug 1st - 3rd	Leaves for the Terrified Art Class	Nov 7th - 9th	Fun with Eggs & Feathers
Aug 6th - 10th	Youth Programme Fun Days Away	Nov 16th - 18th	Youth Programme Inters & Seniors
Aug 11th	Open Day	December	Delicious Christmas Lunches
Aug 18th - 25th	RE Summer School - Sacred Living		

Other periods are booked by individual congregations and districts, *Send a Child to Hucklow*, walking groups, schools, commercial and other organisations, but remember there may be space at any time alongside other things (or, for large groups, exclusive use) for your congregation, district or national groups.

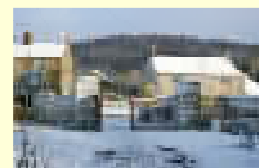
2013 Preview

Winter Walking

From £97 full board from Fri evening to Sunday lunch

Winter Walking 1 11th-13th Jan 2013
Winter Walking 2 18th-20th Jan 2013

The Peak District countryside can be especially lovely at this time of the year tempting one to enjoy a good walk and afterwards a sit by the open fire, perhaps play some games and as always enjoy the scrumptious food. Join in a gentle amble or a longer day-walk. These weekends book up quickly but if there's a space we'll do our very best to fit you in!



Although believed to be correct at the time of publication, prices and other details are subject to change. For further details of accommodation options, prices, booking terms and conditions please contact the Centre manager.

The Nightingale Centre

Stella Burney, Centre Manager, Great Hucklow, Buxton, Derbyshire SK17 8RH
email: info@thenightingalecentre.org.uk telephone: 01298 871218 website: www.thenightingalecentre.org.uk